

Tomaszów Mazowiecki Living Lab

dr Agnieszka Łukasiewicz

Instytut Badawczy Dróg i Mostów

29.05.2025



Funded by
the European Union

Funded by the European Union. Views and opinions expressed are however those of the author(s) only and do not necessarily reflect those of the European Union or of the Europe's Rail JU. Neither the European Union nor the Europe's Rail JU can be held responsible for them.



The project is supported by the
Europe's Rail and its members.



DOFINANSOWANO
ZE ŚRODKÓW
BUDŻETU PAŃSTWA

Multimodality

Railway stations hold a unique position in the urban landscape: they not only act as complex nodes of mobility and transport, but also as public places that can be seen as integral elements of the city. Consequently, stations have a decisive impact on their urban surroundings as places of everyday life, affecting all stakeholders including citizens and the environment.

They can also play a role of multimodal hub.

Multimodal transportation refers to the use of two or more different modes of transport in a single trip, allowing travellers to switch seamlessly between systems without significant delays or obstacles.

For instance, a commuter might drive their car to a local train station, take a train to the city, and then use a bike-sharing service for the final leg of their journey. The coordination of these transport modes creates a fluid and efficient experience, reducing travel time, alleviating congestion, and providing more sustainable choices for commuters and businesses.

Sustainable Mobility

Over 70% of EU citizens live in urban areas (cities, towns and suburbs) that generate 23% of all transport greenhouse gas emissions. To help the European Union reduce greenhouse gas emissions (by at least 55% by 2030 and by 90% by 2050), [the Urban Mobility Framework](#) initiative proposes measures to encourage EU Member States to develop urban transport systems that are **safe, accessible, inclusive, affordable, smart, resilient, and emission-free**.

The EU Urban Mobility Framework strives to improve the quality of life of the EU urban population by addressing urban mobility challenges (such as air pollution, congestion, accessibility, urban road safety, growth of e-commerce, etc.) and by increasing the share of sustainable transport modes (in particular **public transport** and **active mobility**) as well as **zero-emission urban logistics, last mile deliveries and urban fleets (taxis and ride-hailing services)**.

https://transport.ec.europa.eu/transport-themes/urban-transport/sustainable-urban-mobility_en

Multimodal Hubs

It prioritises the construction and modernisation of multimodal hubs, as well as new digital solutions and services. It promotes a coherent and integrated approach to urban mobility planning while mapping out funding options for local and regional authorities to implement priority actions. The initiative also draws lessons from the effect of COVID-19 on public transport to help with the transition to a **climate-neutral economy and emission-free transport** at the local level.



Tomaszów-Mazowiecki Living Lab Objective

The Tomaszów-Mazowiecki Living Lab's main objective is to transform the station into a “**socially-inclusive service hub**” promoting social integration through new services and mobility offers, while also looking at **Nature-Based Solutions** (NBS) for promoting social inclusion, environmental protection. The key focus areas within this objective include:

1. Making the station a place for social and environmental “awareness” connected to the city's heritage
2. Improving the connection between the city and the station from a mobility perspective
3. Introducing local businesses, NGOs and social activities at the station.



What are Nature-Based Solutions (NBS)?



Nature-based Solutions leverage nature and the power of healthy ecosystems to protect people, optimise infrastructure and safeguard a stable and biodiverse future (IUCN - the International Union for Conservation of Nature).

Solutions that are inspired and supported by nature, which are cost-effective, simultaneously provide environmental, social and economic benefits and help build resilience (European Commission).

Tomaszów Mazowiecki: Station at a glance

Basic facts about the station:

The station is situated on the edge of the town.

Railway station in Tomaszów Mazowiecki in Łódzkie Voivodeship, serving both regional and long-distance connections.

The town is surrounded by nature and has some unique natural elements to protect (such as the karst spring, the river and the natural reserve), therefore it is important to study its development in a sustainable way, enabling the conservation of the biodiversity by taking advantage of these natural elements.

Services currently provided to station users: information services, rail timetables, waiting room, toilets.
Best ice-creams in town – seasonally.



Local attractions in Tomaszów



Urban public space and facilities around station



Landuse within 15min walking

- ▲ Tomaszów Mazowiecki station
- 15min Catchment Area_Walking

Landuse

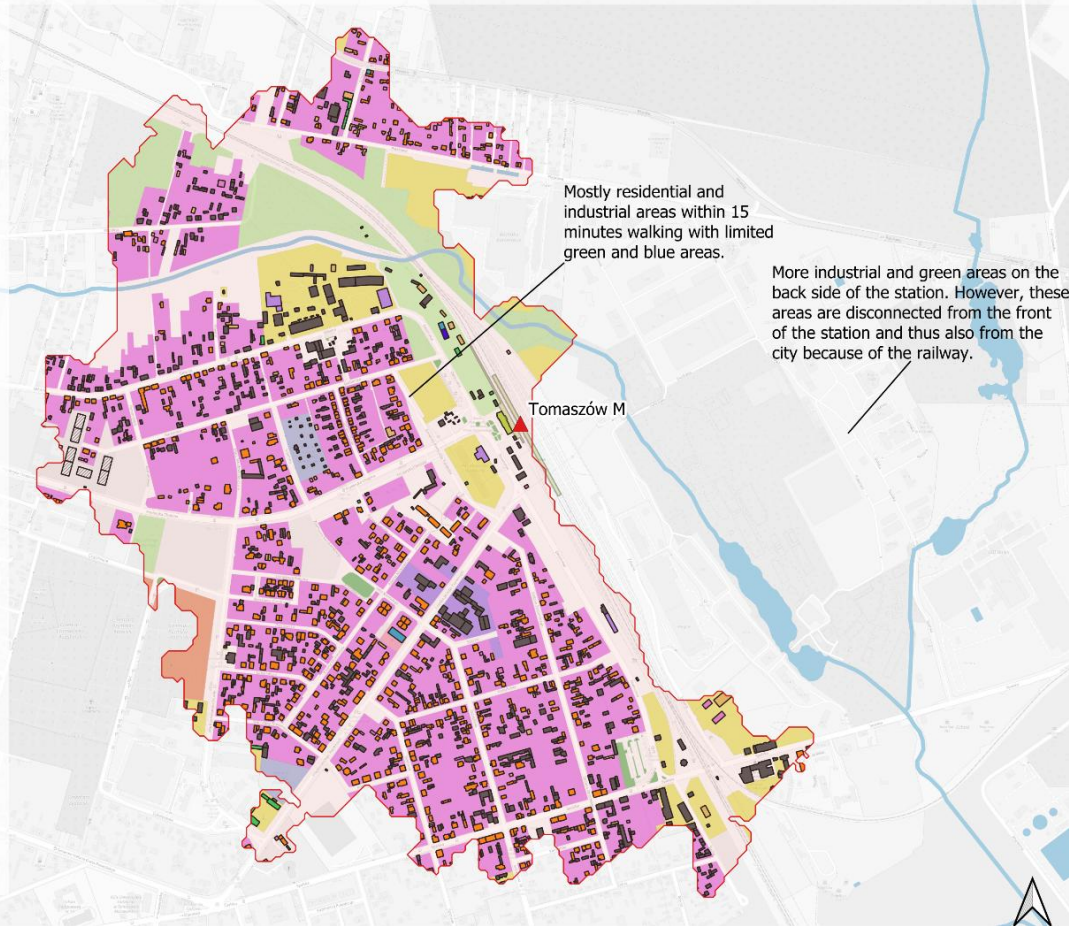
landuse_a

- allotments
- cemetery
- commercial
- grass
- industrial
- residential
- retail
- scrub
- waterways
- water_a

buildings_a

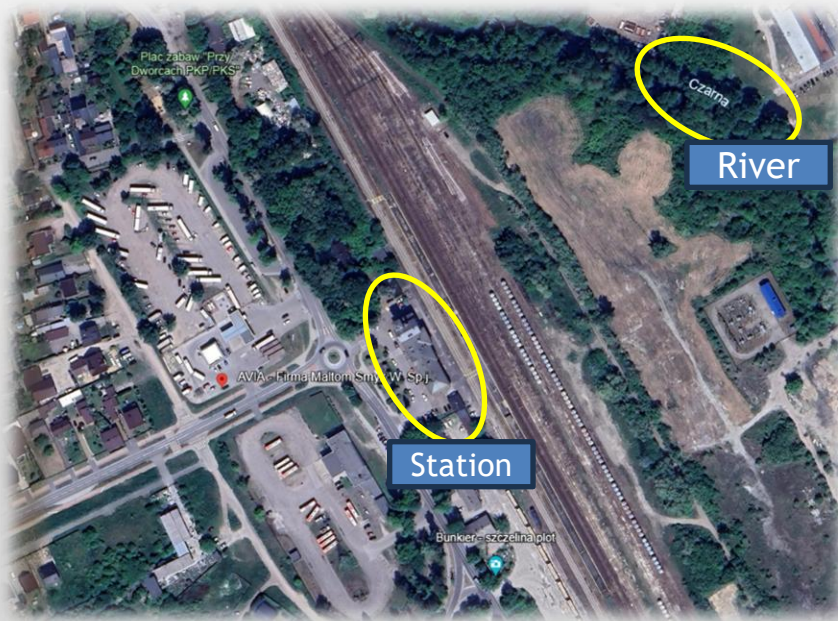
- construction
- farm_auxiliary
- function unknown
- industrial
- office
- other
- residential
- retail
- roof
- train_station
- warehouse
- platform

0 250 500 m



Tomaszów Mazowiecki: Natural reserves around the station

Within the borders of Tomaszów Mazowiecki, an ecological corridor associated with the Czarna River runs along the railroad line to the Dworcowy Bridge in Tomaszów M. and crosses the tracks



Tomaszów-Mazowiecki: Station at a glance

Affluence to the station:

- The latest data refers to a daily flow of 600 passengers

Services working well in and around the station:

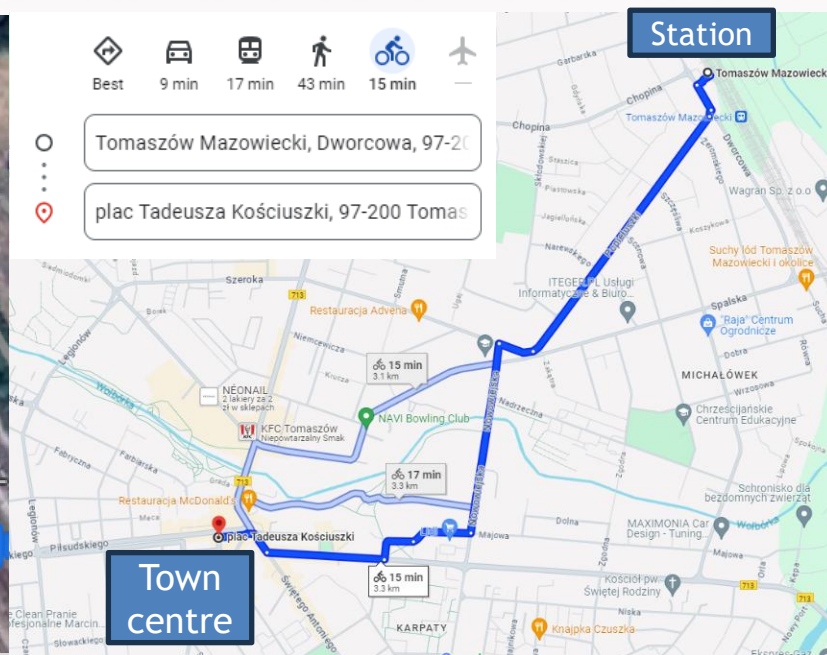
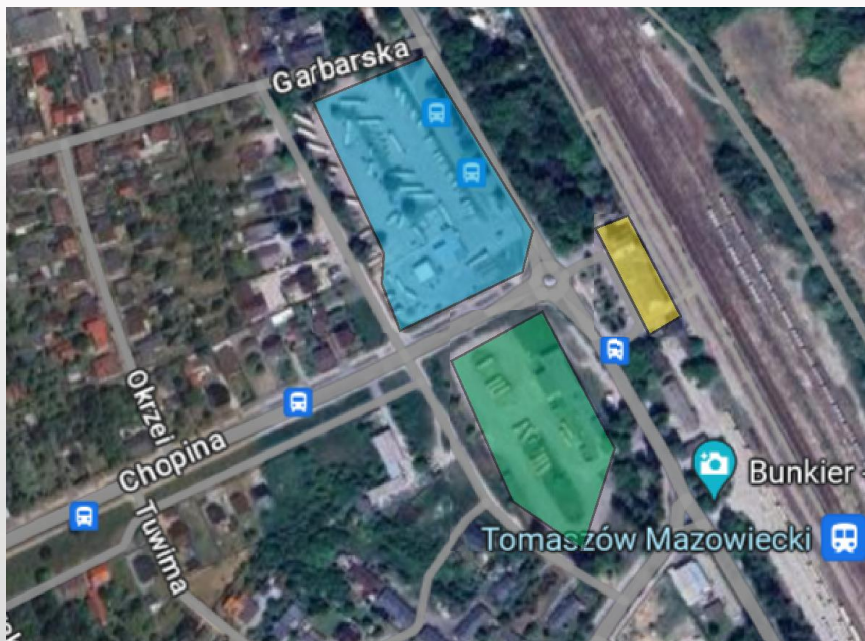
- Waiting room (including on demand)
- Ice cream shop – open seasonally
- Playground nearby the station
- There is a transport hub, including bus station, public transport stop, with substantive transport links

Multimodality:

- There are shared e-scooters available in the surroundings of the station as
- There are several urban public transport services (free for residents) and one intercity bus service near the station
- There is a free car parking area adjacent to the station
- There is a taxi rank at the railway station



Tomaszów Mazowiecki: Transport connections

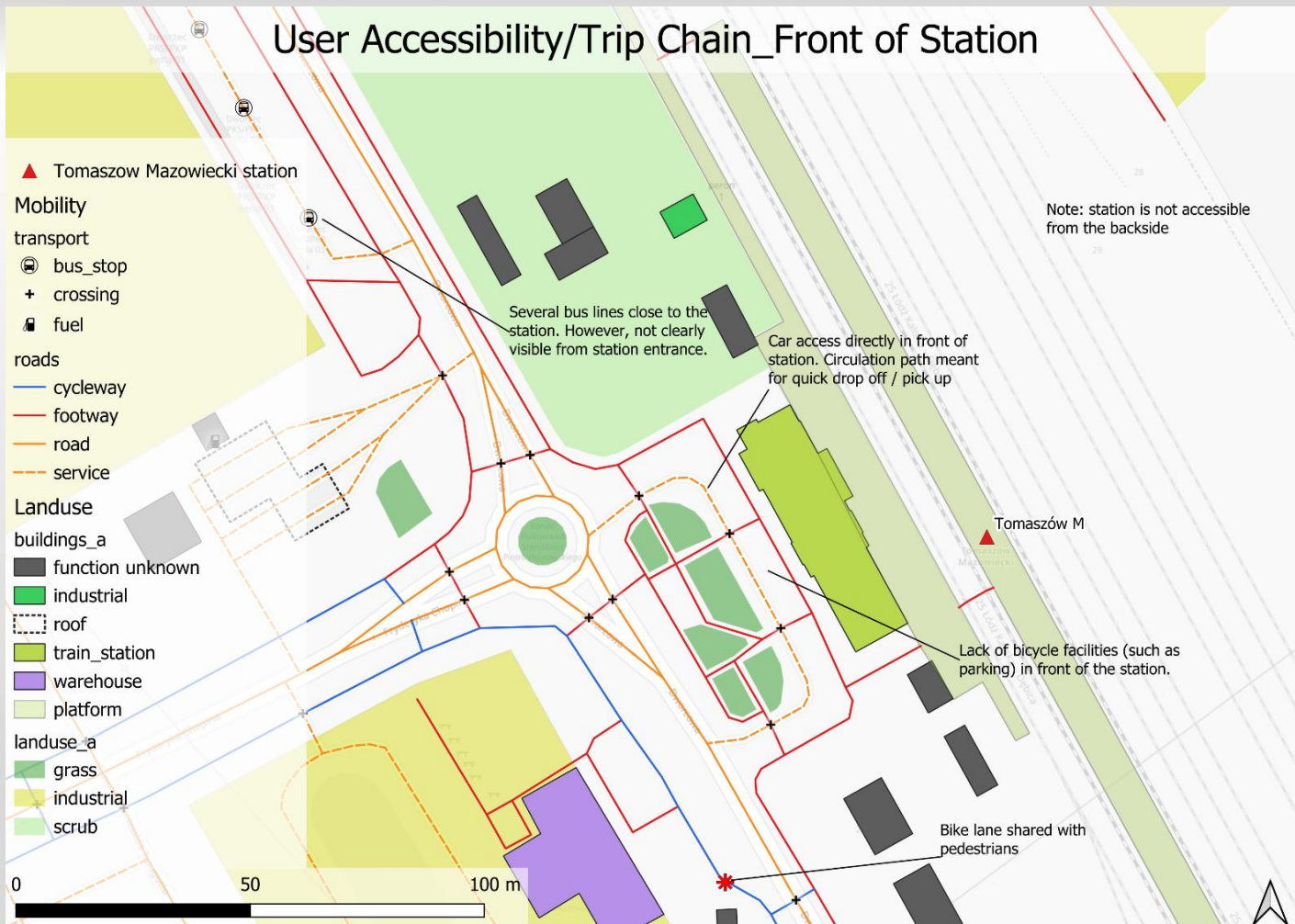


Railway station

Inter-urban and long distance bus station

Public city transport & PKP replacement transport options

User Accessibility/Trip Chain_Front of Station



Station name as socially-inclusive, NBS'

Research questions

How to connect the railway station with the town tissue?

How to make the station be the place attractive to the citizens?

How to make the station be the place friendly to the passengers and tourists?

What kind of activities can be implemented at the station?

What stakeholders groups are interested in the station development?

What multimodal model can be used in Tomaszów to link the station with the town?

How to use historical and nature assets to promote the location?

What kind of nature based solutions can be applied?

Assets analysis - socially - inclusive/passengers/tourists

What is working well?	What is missing / not working well?	What could be exploited more?
<ul style="list-style-type: none"> • Timetables at the station • Taxi service, parking for cars • Waiting room and waiting room on demand • Ice cream shop 	<ul style="list-style-type: none"> • Not integrated information about the public transport, private transport, PKP substitute communication • Information about the city attractions at the station • More diverse services (e.g. shops, bar) 	<ul style="list-style-type: none"> • The integration of real time information • The connection of the railway station with the city • The transport connection with touristic attractions of the town (e.g. NATURE 2000 places, skating arena) • Multimodal, first/last mile mobility

Objectives and proposed solutions

Objectives / KPIs	Solution proposed	Boundaries (e.g. cost, politics, physical infrastructure)
<ul style="list-style-type: none"> Improving information about the transport connection with the town 	Information at the station about other available modes of transport	<ul style="list-style-type: none"> Cooperation between various operators to integrate information
<ul style="list-style-type: none"> Improving information about the city attractions at the station 	Tourism information at the station	<ul style="list-style-type: none"> Cooperation between the city and PKP
<ul style="list-style-type: none"> Improving the connectivity with the centre 	More parking space, also for micro-mobility	<ul style="list-style-type: none"> New infrastructure, cooperation between the city and PKP

Assets analysis – socially – inclusive/citizens

What is working well?	What is missing / not working well?	What could be exploited more?
<ul style="list-style-type: none"> • Timetables at the station • Taxi service, parking for cars • Waiting room and waiting room on demand • Ice cream shop - seasonally • Playground nearby the station 	<ul style="list-style-type: none"> • More diverse services (e.g. shops, bar) • The connection between the town and the station • The station and area around more attractive for different group of citizens 	<ul style="list-style-type: none"> • Multimodal, first/last mile mobility • Cooperation between the city and PKP to make the place around the station more citizens' friendly • Place for leisure • Possible attractions (Summer, Winter)

Objectives and proposed solutions

Objectives / KPIs	Solution proposed	Boundaries (e.g. cost, politics, physical infrastructure)
<ul style="list-style-type: none"> • More services at the station 	<ul style="list-style-type: none"> • Cooperation with small business 	<ul style="list-style-type: none"> • High prices of renting
<ul style="list-style-type: none"> • Making the place friendly for young (school) people 	<ul style="list-style-type: none"> • Attractions for students at the station and around 	<ul style="list-style-type: none"> • Cooperation between the city and PKP, costs
<ul style="list-style-type: none"> • Improving the connectivity with the centre • NGOs, start-ups active at the station 	<ul style="list-style-type: none"> • More parking space, also for micro-mobility • Cooperation between interested parties 	<ul style="list-style-type: none"> • New infrastructure, cooperation between the city and PKP, costs

The placemaking activities, implemented in July-August 2024 in Tomaszów Mazowiecki, as a part of a Living Lab intervention of Rail4Cities project, aimed to:

- mobilise the local community: encourage social activities in the station area; consider the station as an important urban public space;
- support the development of new initiatives and services: gain knowledge of citizens' ideas and expectations regarding railway spaces, with an aim to diversify the range of services and leisure activities in the railway station area;
- promote better integration with the city centre: putting the station on the mental map of residents and tourists; improving wayfinding and aiming to change perceptions of the station area as an important element of the urban fabric.

Rail4Cities Placemaking activities - photo contest



The photo entitled "Contemporary with history" shows that railway stations are places where the **old and the new meet**. The **history** of the railway, the history of the country, the history of architecture and art are all linked to our daily journeys in these characteristic places. This whole historical background is covered over the years with new layers of objects, technologies, signs, customs, materials and textures, so that many generations discover this unique jumble of layers as the first thing after arriving at their destination.

I think it is an important function of the station to be a showcase of the history for the city.
But it does not have to be the most modern. I like it when it shows me the true face of the city and **tells me about its changes and challenges.**

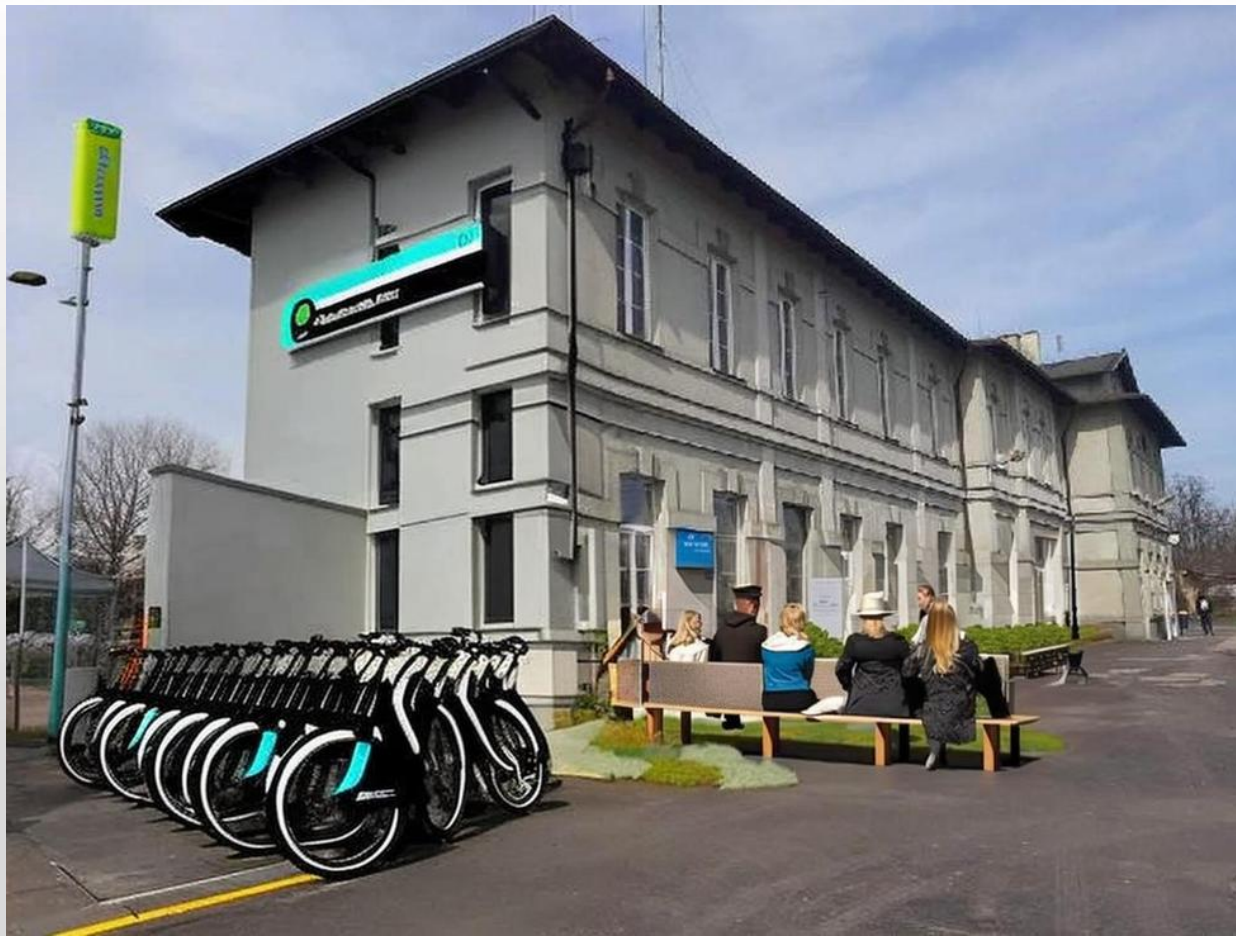
Rail4Cities Placemaking activities - photo contest

Waiting Room - Although the glory days of this building are long gone, it still charms with its **silence and hospitality** :)(...) The building would be a wonderful place for **artistic or writing spaces, for talented professionals and amateurs, for anyone on the move**. The empty walls of the WAITING ROOM and the closed SHOP inside would be great **spaces for art presentations, different types of installations, or interesting articles or stories printed as posters**. Even the floor would be a great excuse for anyone who wants to create their own tile in our station (...)

Everyone who passes through our city will have a chance to experience or discover something :) Isn't that what travelling and waiting is all about? Experiencing, discovering and taking a piece of something new with you :) **A station is a waiting room, a place to pause, to plan or to find yourself in this fast world.**



Urbanist AI - Tomaszów Mazowiecki





**INSTYTUT BADAWCZY
DRÓG I MOSTÓW**
ROAD AND BRIDGE
RESEARCH INSTITUTE

1955 - 2025

Agnieszka.Lukasiewicz@ibdim.edu.pl